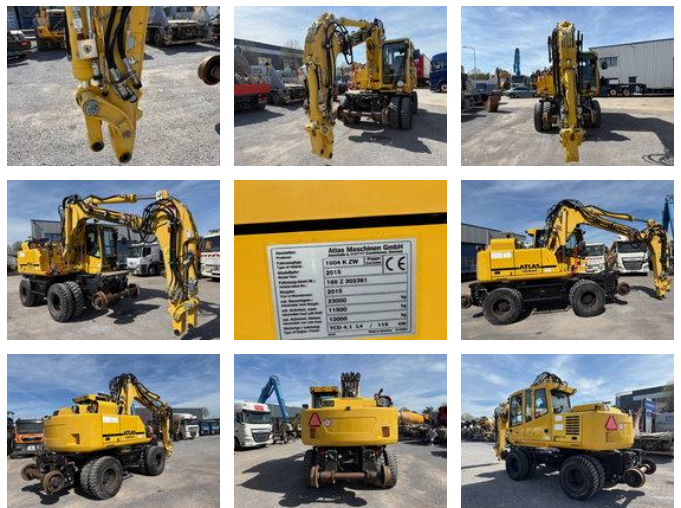


Atlas 1604 K ZW

General features

Brand	Atlas
Subcategory	Rail construction machine
Construction year	2015
Hourmeter reading	2963
Color	Yellow
Condition	Used
General condition	Very good
Fuel	Diesel
Emission class	stage_4
CE marking	Yes



Characteristics

Empty weight 23.000kg

Atlas 1604 K ZW

Technical specifications

Drive	wheels
-------	--------

Engine output	115kw
---------------	-------

Accessories