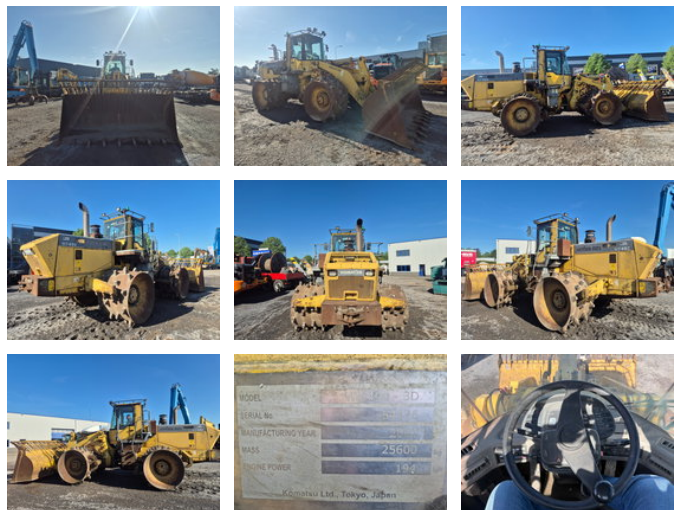


Komatsu WF 450 - 3D

General features

Brand	Komatsu
Subcategory	Landfill compactor
Construction year	2003
Hourmeter reading	4606
Color	Yellow
Condition	Used
Fuel	Diesel



Characteristics

Empty weight 25.598kg

Komatsu WF 450 - 3D

Technical specifications

Engine output

194kw

Description

General Information Model: Komatsu WF450-3 Machine type: Waste Compactor / Soil Compactor / Dozer-type machine Year of manufacture: 2003 Operating hours: approx. 4,000 hrs Operating weight: approx. 26,000 kg Engine Engine manufacturer: Komatsu Engine model: SA6D125E-2 Engine power: 194 kW (approx. 260 HP) Number of cylinders: 6 Displacement: approx. 11.0 litres Fuel type: Diesel ⚙️ Transmission Transmission type: Powershift transmission Forward gears: 4 Reverse gears: 4 Maximum travel speed: approx. 27 km/h Dimensions Overall length (with blade): approx. 8,825 mm Overall width: approx. 3,050 mm Cab height: approx. 3,735 mm Ground clearance: approx. 475 mm Capacities Fuel tank capacity: approx. 340 litres Hydraulic oil capacity: approx. 160 litres Engine oil: approx. 38 litres Coolant: approx. 68 litres Equipment Compaction wheels: Heavy-duty steel wheels with compaction teeth Excellent compaction performance for soil and waste materials Cab: ROPS certified Good all-round visibility Optional air conditioning Capabilities - What can this machine do? Main applications Soil and waste compaction Designed for landfill, earthworks and road construction. The heavy compaction wheels provide deep and effective compaction. Dozing and leveling Equipped with a front blade for pushing, spreading and leveling material. Working in tough conditions Powerful engine and robust drivetrain make this machine ideal for rough and uneven terrain. High productivity High operating weight, strong traction and reliable Komatsu engineering ensure efficient working cycles. Operator comfort and safety ROPS cab offers a safe working environment with good visibility and ergonomic controls.

Accessories