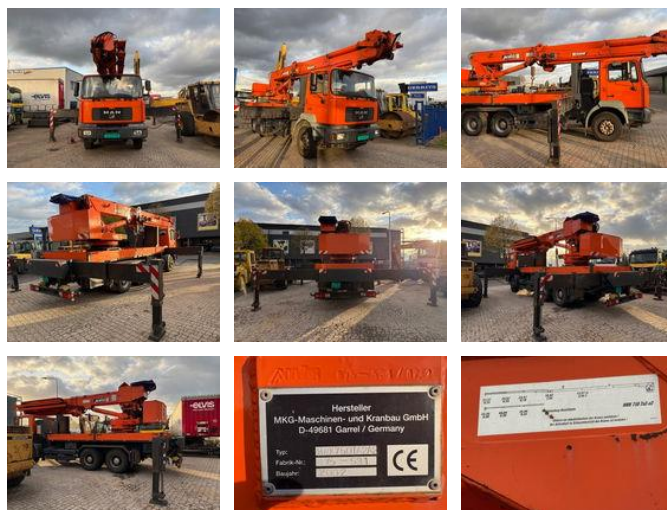


MAN 26.364 6x4

General features

Brand	MAN
Model	26.364
Subcategory	Crane truck
Odometer reading	164.403km
Construction year	2002
Date of first registration	04-04-2002
Hourmeter reading	7764
Color	Orange
Condition	Used
General condition	Very good
Fuel	Diesel
CE marking	Yes



Characteristics

Empty weight	29.615kg
Lifting capacity	18.000kg
Mast type	Telescope

MAN 26.364 6x4

Technical specifications

Number of axes	3
Axis configuration	6x4
Engine output	265kw

Description

MAN 26.364 6x4 with MKG HMK 750 TA2 A2 Crane Are you looking for a powerful and reliable combination for heavy lifting? This MAN 26.364 6x4 with MKG HMK 750 TA2 A2 truck-mounted crane is in excellent condition and ready for use. With its solid MAN chassis and robust MKG crane, this is an ideal machine for construction, transport, and industrial applications. Truck Specifications Make: MAN Type: 26.364 6x4 Year of manufacture: 2002 Mileage: 164,399 km Engine power: 360 hp (MAN D28 engine) Transmission: Manual Drive: 6x4 Total weight: 26 tons MOT valid until: April 2026 Crane Specifications Make: MKG Maschinen- und Kranbau GmbH Type: HMK 750 TA2 A2 Manufacturer number: 875-531 Year of manufacture: 2002 Operating hours: 7,764 hours Load moment: approx. 750 kNm Maximum lifting capacity: approx. 18,000 kg (close to column) Lifting capacity at maximum reach: approx. 350 kg @ 31.6 m Maximum mast length: Approx. 31–34 m Number of telescopic sections: 2 hydraulic extensions (TA2 system) Maximum horizontal reach: ± 31.6 m Crane weight: Approx. 16,000 kg Rotation angle: Endless 360° rotation Stabilizers: Hydraulically extendable Control: Electronic load moment limiter (LMB)

Accessories