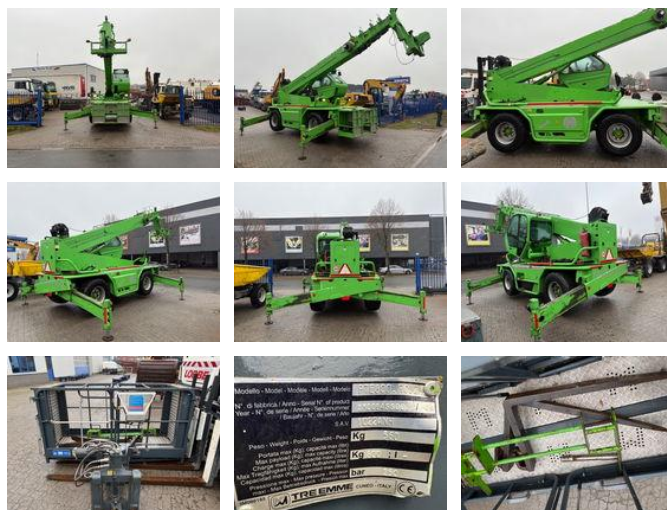


# Merlo 40.25 MCSS

## General features

Brand	Merlo
Subcategory	Rotating telehandler
Construction year	2004
Date of first registration	23-07-2004
Hourmeter reading	5620
Color	Green
Condition	Used
Fuel	Diesel
CE marking	Yes



## Characteristics

Empty weight	16.300kg
Length	6.980cm
Width	2.400cm
Lifting capacity	4.000kg
Lifting height	2.500cm
Mast type	Telescope

# Merlo 40.25 MCSS

## Technical specifications

Drive	wheels
Engine output	107hp

## Description

Merlo Roto 40.25 MCSS – Complete with Work Cage, Pallet Forks, and Remote Control For sale: a very neat and complete Merlo Roto 40.25 MCSS, ideal for construction, assembly, industry, and all work where versatility and reach are essential. This powerful rotating telehandler is fully operational and comes with multiple accessories, making it immediately deployable on any project.

Machine Details Brand / Type: Merlo Roto 40.25 MCSS Serial Number: B4097065 Max. Lifting Capacity: 4,000 kg Max. Lifting Height: approx. 25 meters Max. Reach: approx. 20 meters Rotation: 360° continuous Transmission: Hydrostatic Drive: 4x4 Stabilizers: 4 hydraulic outriggers (MCSS automatic leveling) Travel speed: up to approx. 40 km/h Engine: Powerful 4-cylinder diesel engine (Iveco) Included equipment: Pallet forks Tre Emme PTE800 work platform, specifications: Net weight: 560 kg Permitted load: 800 kg Max. pressure: 250 bar Radio remote control About the work platform (PTE800) The included work platform is in excellent condition and fully hydraulically integrated. It is equipped with a safety railing all around, non-slip floor plates, and all required safety features. Perfect for working at height with multiple people. General condition The machine is technically sound, neatly equipped, and ready for use. Ideal for contractors, rental companies, industrial companies and anyone looking for a reliable all-round telehandler with a long reach.

## Accessories