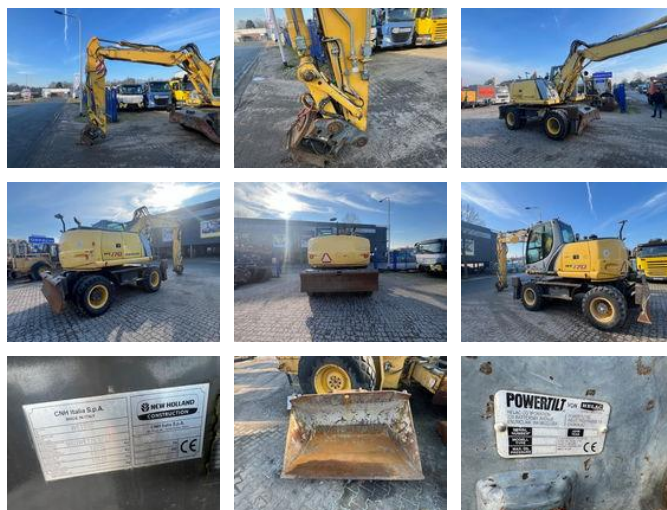


New Holland WE 170 C

General features

Brand	New Holland
Subcategory	Wheeled excavator
Construction year	2012
Hourmeter reading	10509
Condition	Used
General condition	Very good
Fuel	Diesel
CE marking	Yes



Characteristics

Empty weight 18.000kg

New Holland WE 170 C

Description

New Holland WE 170 C Year off construction : 2012 10.500 working hours 105 KW Quick hit with Power tilt including 3 Buckets
1.60M 2 x 0.60M

Accessories