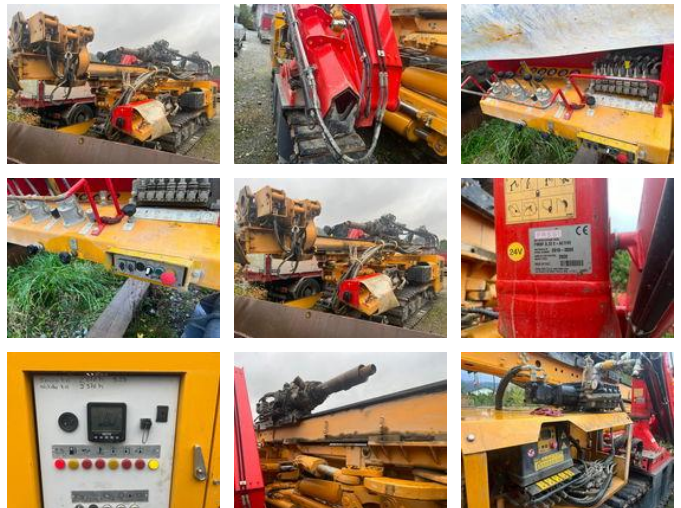


Diversen NCB FD 1800 HD-DTS

Algemene kenmerken

Merk	Diversen
Subcategorie	Boorinstallatie
Bouwjaar	2021
Afgelezen urenstand	4303
Conditie	Gebruikt
Algemene staat	Erg goed
Brandstof	Diesel
CE markering	Ja



Eigenschappen

Ledig gewicht

20.100kg

Diversen NCB FD 1800 HD-DTS

Omschrijving

NCB FD 1800 HD - DTS Drill Year 2021 4300 Hours Fassi F 90 B Crane with remote control UNDERCARRIAGE Overall Length 3210 mm Track Width 2350 mm Shoes Width 500 mm ENGINE DEUTZ Engine Type TCD 2013 L6 2V Maximum Power Output 190 kW Rated Output 2300 r.p.m. Fuel Tank Capacity 350 l HYDRAULIC SYSTEM Hydraulic Pumps 1st Circuit 80 l/min 2nd Circuit 55 l/min 3rd Circuit 55 l/min Hydraulic Oil Tank Capacity 481 l Working Pressure 250 bar MAST Mast Length 8000 mm Pull-Down Cylinder Force (Push/Pull) 13000/20000 kgm Pull-Down Stroke 4300 mm Maximum Rods Length 4000 mm ROTARY HEAD T3-2000 Maximum Torque 2045 kgm Speed Range 0 - 113 rpm Number of Hydraulic Motor 3 Type of Hydraulic Motors CHAR-LYNN T2-1000 Maximum Torque 1000 kgm Speed Range 0 - 88 rpm Number of Hydraulic Motor 2 Type of Hydraulic Motors DANFOSS WINCH AUXILIARY WINCH Maximum pulling force (1st Layer) 15 kN Rope Diameter 10 mm CLAMPS CLOSING CLAMP Blocking Clamp Diameter 350 mm Blocking Clamp Force 15300 daN BREAKOUT CLAMP Blocking Clamp Diameter 350 mm Blocking Clamp Force 5500 daN Break-Out Force 15300 daN THIRD CLAMP Blocking Clamp Diameter 350 mm Blocking Clamp Force 15300 daN AUXILIARY SERVICE CRANE Fassi F.90 B WATER PUMP (UDOR 200) Maximum Water Delivery 200 l/min Maximum Water Pressure 80 bar WEIGHT Total Weight- approx 20 ton

Accessoires